

Print & Cut LED-UV Curable Inkjet Printer

Speedy and easy printing and cutting by just one unit.
Upcoming line of UCJV300 series!



Printable up to 800mm width
Small foot-print and versatile model covering wide range of stickers, labels and point of sales materials making.

UCJV300-75

0.8m width



Printable up to 1090mm width
Quick printing and cutting to apply a B0 size poster of commercial print besides promotional items of various type of media.

UCJV300-107

1.1m width



Printable up to 1361mm width
Suitable for both signage and point of marketing materials. Quick processing without ink drying time by UV-LED to reduce the working time significantly for orders in short delivery time.

UCJV300-130

1.3m width



Printable up to 1610mm width
Applicable to large format sign, long-sized sticker, vehicle wrapping films, too
Reliable functions for Print & Cut to wide sized print production.

UCJV300-160

1.6m width

UCJV150-160

Entry model for LED-UV Print & Cut
Superior cost-effectiveness 1.6 meter width model to fulfill customer various demands.



UCJV300 Series

"High-spec" models applying the 4-layer/5-layer print

Specifications

Item	UCJV300-75	UCJV300-107	UCJV300-130	UCJV300-160	UCJV150-160
Print head	On-demand piezo head				
Print resolution	300dpi, 600dpi, 900dpi, 1200dpi				
Droplet size	Min. 7pl, Max. 28pl				
Head gap	3 degrees adjustable (2.0/2.5/3.0mm) by manual				
Ink	Type	LUS-170/LUS-200			LUS-170/200
	Color	LUS-170(C,M,Y,K,Lc,Lm,W/C,M,Y,K,Ci,W/C,M,Y,K) LUS-200(C,M,Y,K,W/C,M,Y,K)			(C,M,Y,K)
	Capacity	IL (Bottle supply)			
Max. print width	800mm (31.5in)	1,090mm (42.9in)	1,361mm (53.5in)	1,610mm (63.4in)	
Max. media width	810mm (31.9in)	1,100mm (43.3in)	1,371mm (54.0in)	1,620mm (63.8in)	
Media thickness	1.0mm or less				
Media roll outer diameter	250mm or less				
Media roll weight	40kg (88.2 lb) or less				
Cut speed	Max. 300mm/s (420mm/s in 45 degrees direction)				
Cut pressure	10 - 450gf				
Cutter types	Eccentric cutter, Blade for small character, Blade for reflective sheet Blade for fluorescent sheet, Standard blade for vinyl				
Safety standard	VCCI Class A / FCC Class A / Compliant with UL 60950-1, ETL CE Marking (EMC, Low Voltage, Machinery Directive), RoHS CB Report / REACH : ENERGY STAR / RCM				
Interface	USB2.0 / Ethernet1000 BASE-T				
Power supply	Single phase AC100 - 120/200-240V ± 10%, 50 / 60Hz ± 1Hz				
Power consumption	AC100V : 1.44kW / AC200V : 1.92kW or less				
Operational environment	Temperature : 20-30 degC / 68-86 degF, humidity : 35-65% Rh (No condensing)				
Outside dimensions	mm	2,090 × 776 × 1,475	2,380 × 776 × 1,475	2,650 × 776 × 1,475	2,900 × 776 × 1,475
	in	82.3 × 30.6 × 58.1	93.7 × 30.6 × 58.1	104.3 × 30.6 × 58.1	114.2 × 30.6 × 58.1
Weight	kg/lb	139 / 306.4	156 / 343.9	172 / 379.2	188 / 414.5

*Specifications, designs and dimensions stated in this list may be subject to change without notice due to technical improvement etc.

Supplies

Product name	Color	Item code	Remarks
LUS-170	Cyan	LUS17-C-BA	1L bottle
	Magenta	LUS17-M-BA	
	Yellow	LUS17-Y-BA	
	Black	LUS17-K-BA	
	Light Cyan	LUS17-LC-BA	
	Light Magenta	LUS17-LM-BA	
LUS-200	White	LUS17-W-BA	1L bottle
	Clear	LUS17-CL-BA	
	Cyan	LUS20-C-BA	
	Magenta	LUS20-M-BA	
	Yellow	LUS20-Y-BA	
	Black	LUS20-K-BA	
	White	LUS20-W-BA	

Software

Newly upgraded RIP software with higher functionality and more user-friendliness

Raster Link 6 PLUS

Added useful functions

- ◆ [ID-Cut] for consecutive cutting
- ◆ [Multi layers print] for wider expressiveness
- ◆ [Braille print] for easy operation of braille print
- ◆ [Transparent effect] for easy operation of transparent effect
- ◆ PDF data image with transparent effect is faithfully printable as the original.

Print speed

UCJV300 Series (4C 1Layer) LUS-170/LUS-200						UCJV150-160 (4C 1Layer) LUS-170/LUS-200						
Model		UCJV300-75	UCJV300-107	UCJV300-130	UCJV300-160	Model		UCJV150-160	UCJV150-160		UCJV150-160	
Print mode		Print speed (m/h)				Print mode		Print speed (m/h)				
Draft	300x600 4P	Bi/STD	18.0	21.5	24.0	25.8	Draft	300x600 8P	Bi/STD	13.4		
High Speed	300x900 6P	Bi/STD	14.2	17.0	19.1	20.6	High Speed	300x900 12P	Bi/STD	10.6		
Standard	600x600 8P	Bi/Hi	10.8	13.0	14.6	15.7	Standard	600x600 16P	Bi/Hi	8.0		
Quality	600x1200 16P	Bi/Hi	5.6	6.7	7.5	8.0	Quality	600x1200 32P	Bi/Hi	4.0		
High Quality	1200x1200 16P	Bi/Hi	3.5	4.1	4.5	4.7	High Quality	1200x1200 32P	Bi/Hi	2.4		

UCJV300 Series (5C/6C/7C 1Layer) (LUS-170/6C/7C LUS-200/5C)						UCJV300-160 (5C/6C/7C Multi layers) (LUS-170/6C/7C LUS-200/5C)														
Model		UCJV300-75	UCJV300-107	UCJV300-130	UCJV300-160	Model		2 layer	3 layer	4 layer	5 layer	Model		2 layer	3 layer	4 layer	5 layer			
Print mode		Print speed (m/h)				Print mode		Print speed (m/h)				Print mode		Print speed (m/h)						
Draft	300x600 8P	Bi/STD	9.6	11.3	12.6	13.4	High Speed	300x900 12P	Bi	5.4	3.6	2.7	2.1	High Speed	300x900 12P	Bi	5.4	3.6	2.7	2.1
High Speed	300x900 12P	Bi/STD	7.4	8.9	9.9	10.6	Standard	600x600 16P	Bi	4.0	2.7	2.0	1.6	Standard	600x600 16P	Bi	4.0	2.7	2.0	1.6
Standard	600x600 16P	Bi/Hi	5.6	6.7	7.5	8.0	Quality	600x1200 32P	Bi	2.0	1.3	1.0	0.8	Quality	600x1200 32P	Bi	2.0	1.3	1.0	0.8
Quality	600x1200 32P	Bi/Hi	2.9	3.4	3.8	4.0	High Quality	1200x1200 32P	Uni	1.2	0.8	0.6	0.5	High Quality	1200x1200 32P	Uni	1.2	0.8	0.6	0.5
High Quality	1200x1200 32P	Bi/Hi	1.8	2.1	2.3	2.4														

Inks and substrates:

- Please note that properties and adhesion, weather resistance, etc. of ink and substrates can vary. Please test materials before printing.
- Some substrates require primer before printing. Please test materials beforehand or ask your sales representative.

Safety notice:

- These printers produce UV radiation. To protect your health, please observe the following guidelines carefully.
- Do not look directly into the UV light source, or expose your skin (such as your hands) directly to the UV light source.
- Depending upon the print mode, some VOCs could be emitted from printed area not yet cured and hardened.
- In addition, please read and follow the instructions and guidelines of the manual carefully.

- Some examples shown in this catalogue are artificial renderings. ● Specifications, designs and dimensions shown in this catalogue may be subject to change without notice for technical improvements.
- The corporate and merchandise names in this catalogue are the trademarks or registered trademarks of the respective corporations. ● Inkjet printers use extremely fine dots, so colors may vary slightly after replacement of print heads. ● Also note that when using multiple printer units, colors could vary slightly from one unit to another due to slight individual differences.
- Please note that descriptions and data in this catalogue are as of April 2019.

Mimaki MIMAKI ENGINEERING CO., LTD.
mimaki.com
2182-3 Shigeno-otsu, Tomi-city, Nagano 389-0512, Japan
Tel. +81-268-64-2281

Mimaki Global Network

USA	MIMAKI USA, INC.	Europe	MIMAKI EUROPE B.V.
Brazil	MIMAKI BRASIL COMERCIO E IMPORTACAO LTDA	Indonesia	PT. MIMAKI INDONESIA
India	MIMAKI INDIA PRIVATE LIMITED	Australia	MIMAKI AUSTRALIA PTY. LTD.
Taiwan	MIMAKI ENGINEERING (TAIWAN) CO.,LTD.	China	SHANGHAI MIMAKI TRADING CO.,LTD.
Singapore	MIMAKI SINGAPORE PTE. LTD.	Thailand	MIMAKI (THAILAND) CO.,LTD.

For
SIGN
GRAPHICS

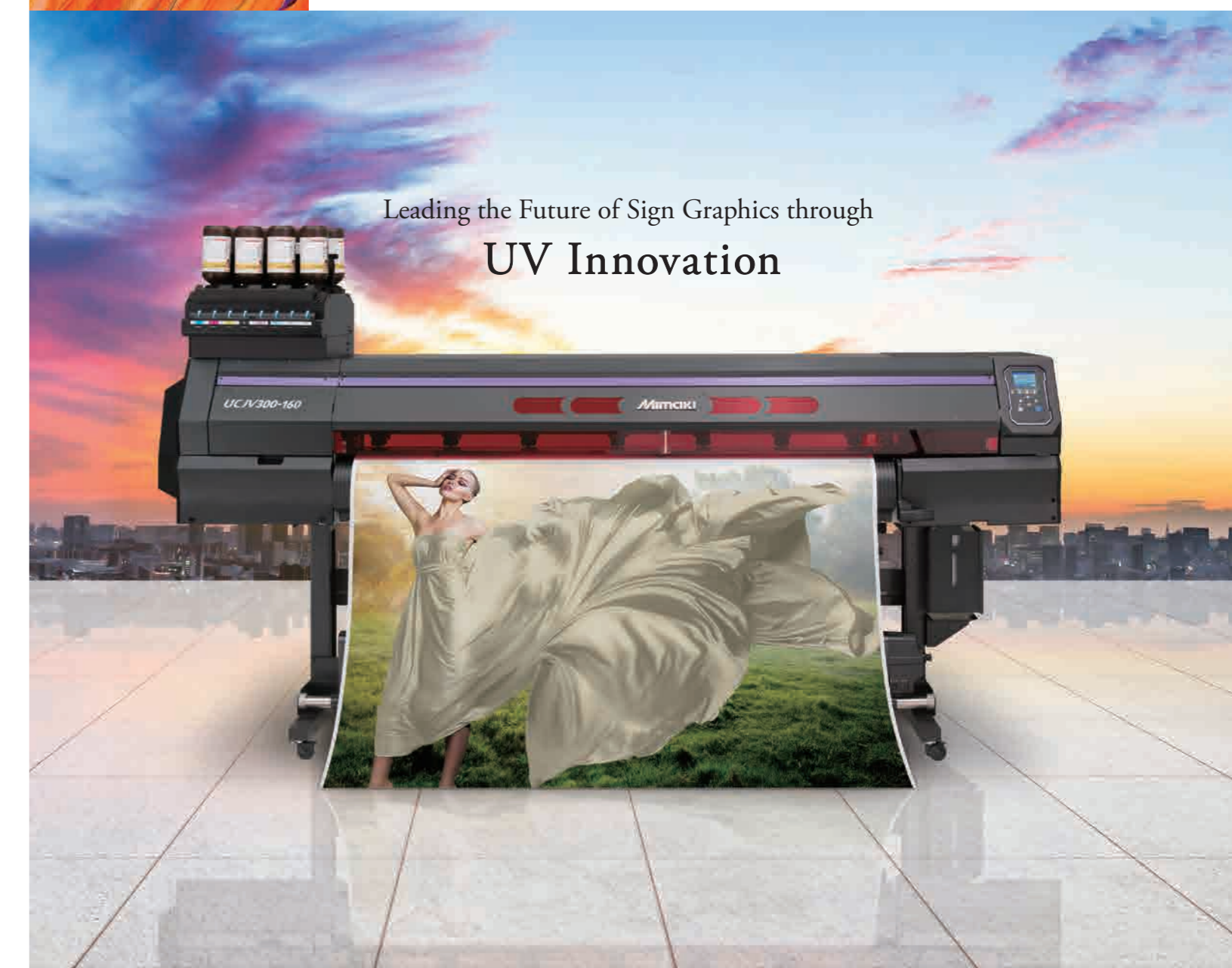
Print & Cut LED-UV Curable Inkjet Printer

Mimaki

UCJV300 Series

UCJV300-75/107/130/160

UCJV150-160



Leading the Future of Sign Graphics through
UV Innovation



Mimaki
Green Technology



UCJV300series UCJV150-160

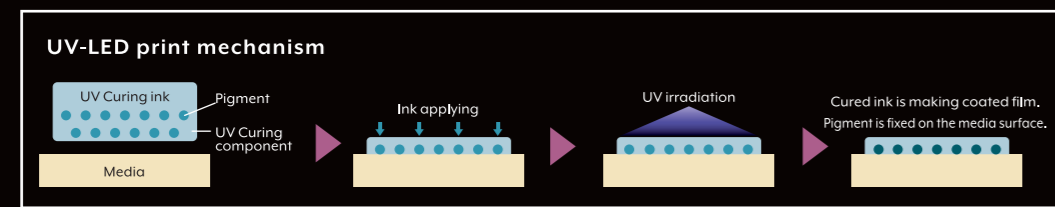
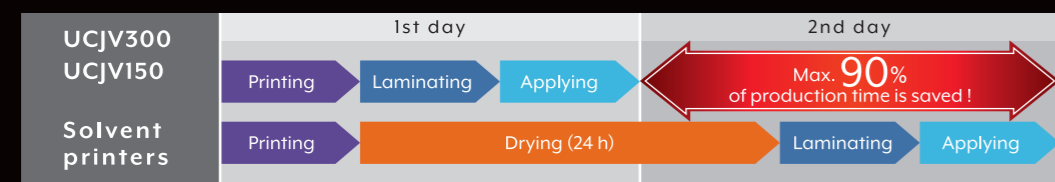
Leading the Future of Sign Graphics through
UV Innovation

Immediate processing and deliver are available by UV-LED.

With the UV ink property of immediate curing upon UV light irradiation, no drying time is required. The post-processing and sign applying are possible instantly. Required time for production is saved to be possible to undertake even an order of tight scheduled work. It is immune from ink blocking while printing by multi layers or using white ink. There is no necessity to mind media stains nor to attend by operator.



Ink is instantly cured by UV irradiation just upon the print.



Newly developed environmentally friendly UV ink, [LUS-170]

The new [LUS-170] ink is environmentally friendly, generates almost no VOCs and can be cured without the use of ozone-causing short-wavelength UV. The yellow ink of [LUS-170] is eco-friendly and nickel-free though the nickel is used in some general yellow inks.

Flexible UV ink with the stretch ability up to 200%, [LUS-200]

The [LUS-200] ink has the stretch ability up to 200%. This capability suits stretch film applications such as vehicle wrapping. Printed films can be applied onto curved surface successively without ink cracking. [LUS-170] and [LUS-200] gained the [GREENGUARD Gold] certification, which is based on most strict global standard of chemical substance diffusion.

The GREENGUARD Gold certification assures the product property conforms to schools and medical facilities.



Printing is possible on a wide range of materials!

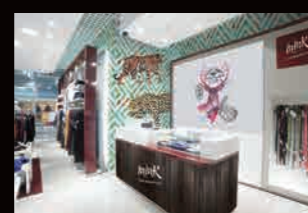
UV ink is printable to PVC and tarpaulin which are compatible with solvent, as well good matching with fabric, non specified ink receiving paper and PET. More varied applications with UCJV300 Series due to mountable white ink.



Shoji (Japanese paper)



Banner flag



Wall paper
(Illustration or letters print to the pattern printed wall paper)

UV-LED print
enhancing the work
efficiency

Ecological
newly developed ink

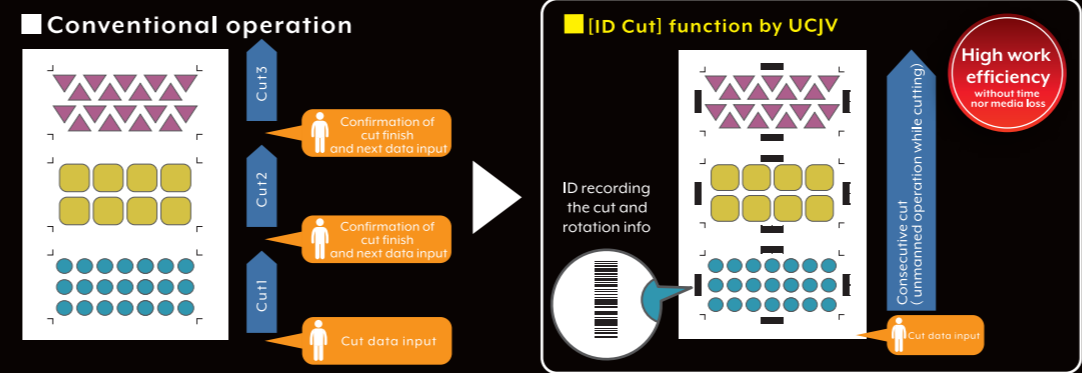
A wide range
of materials
×
UV ink

Immediate materializing an image idea by Print & Cut

[UCJV Series] are equipped with cutting function of high performance and high efficiency to be able to make labels, stickers and car wrapping film by one unit only.

[ID Cut] can help to cut easily even for multiple types data of small lot of each.

[ID Cut] is to print together ID (Barcode) for recognition of cutting details and media rotation with crop marks while placing the crop mark on the RIP. And then cut data of every print data is readable to start cutting automatically. Then with this function, cutting starts without any respective cutting order by operator at RIP software. It saves media losses by failure of data transmission.



Broad range of applications

Print & Cut with instant drying UV-curable ink can broaden the range of applications.

Store decorations, posters, labels, stickers, and point-of-sale items can all be produced with a single unit.

Integrated promotional approach will suit the method and image of marketing and expand business opportunities.



UV printing
×
Print & Cut
to broaden the range
of applications.

UV Clear ink widening the scope of design and business possibility

LUS-170 Clear ink is available with UCJV300 Series.

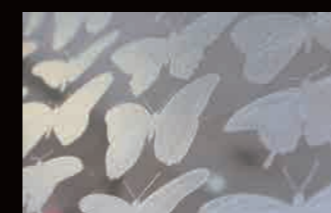
The superior function [Mimaki Clear Control] equipped with UCJV300 Series can achieve beautiful clear printing suppressing the dust adherence and bubble generation by processing the clear ink print and UV-light irradiation simultaneously.

There are two types of print modes you can choose from depending on your purpose: [glossy finish] of sense of class given by shiny sheen and [matte finish] producing a muted matting effect.

Moreover, by installing RasterLink6Plus attached to the UCJV300 Series, [ARTISTA UV Texture Library] with 129 types of swatches in Adobe Illustrator can be used. The Library provides plenty of textures to widen the scope of design and business possibility.



Sizzling effect by glossy finish



Window display like frosted glass
by matte finish



Expressive design to simulate touching intention
by clear texture

Expression selectable
UV Clear ink

Four-layer print [Day&Night Printing]

A very new advertising expression with showing different image effect between daytime and nighttime which can be created by four-layer print*. [Day & Night Printing], a visible design change is presented by backlighting of four-layer print of [Color]+[Black]+[White]+[Color]. A proposal of highly designed sign can be put forward without any retouches of current simple light box but just ON/OFF of internal lamp. It can make a graphic change or an illumination of specified area etc.

* Four-layer print is available only to UCJV300 series that white ink is mountable.



[Back light OFF]
Visible image in daytime. Only 4th layer is visible.



[Back light ON]
Visible image in nighttime. By backlighting, the color image of 1st layer is coming up.

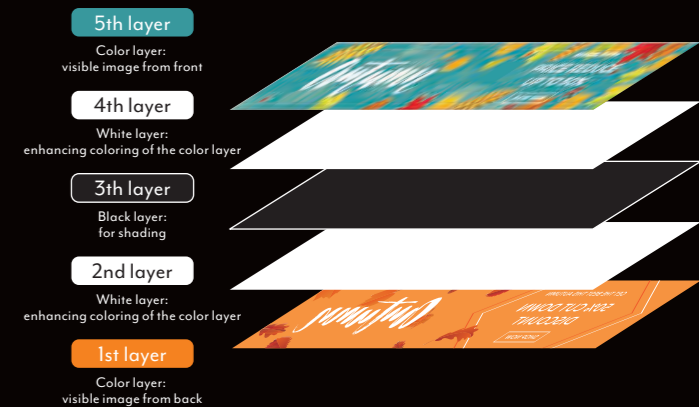
Multi-layer print
for a new advertisement expression
(Available for UCJV300 Series only)

Five-layer print [Front&Back Printing]

Different printed design can appear on the "Front and Back" by one time print.

By printing on a transparent film with five layers, the [Front&Back Printing] of different design on the two sides is realized.

A different image of indoor and outdoor of one window sign, etc., it is a new proposal of more attractive sign with higher design property.



Outside



Inside