

Ink set

| One way (One ink mounting) |                    |   |   |                   |                                   |
|----------------------------|--------------------|---|---|-------------------|-----------------------------------|
| 1                          | Direct sublimation | Sb420 (Bl, M, Y, K, Lbl, Lm)              | 4 | Reactive dye      | Rc400 (C, M, Y, K, Bl, R, Or, Lk) |
| 2                          | Disperse dye       | DD400 (C, M, Y, K, R, Gray, Violet, Pink) | 5 | Reactive dye      | Rc500 (C, M, Y, K, Bl, R, Or, Lk) |
| 3                          | Textile pigment    | TP400 (C, M, Y, K, Bl, R, Lk)             | 6 | Acid Reactive dye | Ac400 (C, M, Y, K, Bl, R, Or, Lk) |

One way :Direct sublimation (Sb420) can be printed with 4 or 6 colors and Textile pigment (TP400) with 4 or 7 colors. The other ink types can be printed with 8 colors.  
Hybrid :Possible to print with 4 colors per ink type.

Specifications

| Item                                   |              | Tx300P-1800 MkII   |
|--|--------------|--|
| Printhead                              |              | On-demand piezo head (4 printhead in-line)   |
| Print resolution (Depends on ink type) |              | 360 dpi, 540 dpi, 720 dpi, 1,080 dpi, 1,440 dpi  |
| Max. print width                       |              | 1,920 mm (Textile) 1,940 mm (Paper)  |
| Max. media width                       |              | 1,920 mm (Textile) 1,950 mm (Paper)  |
| Ink                                    | Type/Color   | 4/6/7/8c (*)   |
|  |              | Direct sublimation : Sb420 (Bl, M, Y, K, Lbl, Lm)  |
|  |              | Disperse dye : DD400 (C, M, Y, K, R, Violet, Pink, Gray)   |
|  |              | Textile pigment : TP400 (C, M, Y, K, R, Bl, Lk)  |
|  |              | Reactive dye : Rc400/500 (C, M, Y, K, Lk, R, Bl, Or)   |
|  |              | Acid dye : Ac400 (C, M, Y, K, Lk, R, Bl, Or)   |
|  |              | Dye sublimation (transfer) : Sb411 (Bl, M, Y, K)   |
|  | Package size | 2L Ink pack  |
| Media thickness                        |              | 1.0 mm or less   |
| Media roll weight                      |              | 40 kg or less  |
| Media type                             |              | Natural fiber (Cotton, Silk, Hemp), Chemical fiber (Polyester, Nylon) *Excluding elastic media Paper   |
| Certifications                         |              | VCCI class A, FCC class A, ETL UL 60950-1 ETL, ENERGY STAR, RCM, EAC CE Marking (EMC, Low voltage, Machinery directive, and RoHS), CB, REACH |
| Interface                              |              | USB 2.0 Hi-speed / Ethernet 1000BASE-T   |
| Power                                  |              | Single-phase AC100 to 120V / AC200 to 240V 50/60Hz ± 1Hz   |
| Power consumption                      |              | (AC100V) 1,440W×1, (AC200V) 1,920W×1   |
| Operation environment                  |              | Temperature: 20 - 30 degC, Humidity : 35 - 65% Rh (Non-condensation)   |
| Outer sizes (WxDxH)                    |              | 3,200 × 965 × 1,857 mm (126.0 × 38.0 × 73.2 in)  |
| Weight                                 |              | 260 kg (573.2 lb)  |

\*The color number depends on the ink type and with/without Hybrid. In the case of Hybrid, four colors are applied for each ink type.

Options

| Item                   | Code      | Remark  |
|------------------------|-----------|---|
| Mist catch unit        | OPT-J0396 |   |
| Small relay box        | OPT-J0370 | Interlock controller between a main unit and an external heater                       |
| Relay box2             | OPT-J0407 | For turning on/off of the media drying heater by interlocking with printing operation |
| Slip sheet holder unit | OPT-J0405 | Holder unit using for prevention of ink set-off                                       |
| 1 inch holder unit     | OPT-J0399 | Feeder unit for 1 inch-core media   |

Software

Either TxLink4 Lite or RasterLink6Plus is bundled under the selection at the time of your purchasing.

Professional RIP software with new features and more advanced for textile printing

TxLink4™

Lite

◆ Color replacement function for Raster / vector data and CMYK / RGB images  
◆ The "16-bit rendering" for super fine color gradation  
◆ The "Parallel RIP" and the "Load balancing" for high work efficiency



Newly upgraded RIP software with higher functionality and more user-friendliness

RasterLink6™

PLUS

Simple icon display - Intuitive and easy-to-understand operability  
Save operation time by registering settings as favorites

| Hybrid (Two types ink mounting) |   |  |  |
|---------------------------------|---|--|--|
| 1                               | Dye sublimation (transfer):Sb411 (Bl, M, Y, K) / Textile pigment: TP400 (C, M, Y, K)    |  |  |
| 2                               | Direct sublimation:Sb420 (Bl, M, Y, K) / Textile pigment : TP400 (C, M, Y, K)           |  |  |
| 3                               | Dye sublimation (transfer):Sb411 (Bl, M, Y, K) / Direct sublimation:Sb420 (Bl, M, Y, K) |  |  |

Supplies

| Item  |               | Code             |
|---|---------------|------------------|
| Direct sublimation ink<br>Sb420<br>2L Ink pack<br>ECO PASSPORT certified ink          | Blue          | I-SB420-BLD-2L-1 |
|   | Magenta       | I-SB420-MD-2L-1  |
|   | Yellow        | I-SB420-YD-2L-1  |
|   | Black         | I-SB420-KD-2L-1  |
|   | Light Blue    | I-SB420-LBD-2L-1 |
| Disperse dye ink<br>DD400<br>2L Ink pack  | Light Magenta | I-SB420-LMD-2L-1 |
|   | Cyan          | I-DD400-C-2L-1   |
|   | Magenta       | I-DD400-M-2L-1   |
|   | Yellow        | I-DD400-Y-2L-1   |
|   | Black         | I-DD400-K-2L-1   |
|   | Red           | I-DD400-R-2L-1   |
|   | Violet        | I-DD400-V-2L-1   |
|   | Pink          | I-DD400-P-2L-1   |
|   | Gray          | I-DD400-G-2L-1   |
|   | Cyan          | I-TP400-C-2L-1   |
| Textile pigment ink<br>TP400<br>2L Ink pack   | Magenta       | I-TP400-M-2L-1   |
|   | Yellow        | I-TP400-Y-2L-1   |
|   | Black         | I-TP400-K-2L-1   |
|   | Red           | I-TP400-R-2L-1   |
|   | Blue          | I-TP400-BL-2L-1  |
| Reactive dye ink<br>Rc400<br>2L Ink pack  | Light Black   | I-TP400-LK-2L-1  |
|   | Cyan          | I-RC400-C-2L-1   |
|   | Magenta       | I-RC400-M-2L-1   |
|   | Yellow        | I-RC400-Y-2L-1   |
|   | Black         | I-RC400-K-2L-1   |
|   | Light Black   | I-RC400-LK-2L-1  |
|   | Red           | I-RC400-R-2L-1   |
|   | Blue          | I-RC400-BL-2L-1  |
|   | Orange        | I-RC400-OR-2L-1  |
|   | Cyan          | I-AC400-C-2L-1   |
| Reactive dye ink<br>Rc500<br>2L Ink pack  | Magenta       | I-AC400-M-2L-1   |
|   | Yellow        | I-AC400-Y-2L-1   |
|   | Black         | I-AC400-K-2L-1   |
|   | Light Black   | I-AC400-LK-2L-1  |
|   | Red           | I-AC400-R-2L-1   |
| Acid dye ink<br>Ac400<br>2L Ink pack  | Blue          | I-AC400-BL-2L-1  |
|   | Orange        | I-AC400-OR-2L-1  |
|   | Cyan          | I-AC400-C-2L-1   |
|   | Magenta       | I-AC400-M-2L-1   |
|   | Yellow        | I-AC400-Y-2L-1   |
| Dye sublimation (transfer) ink*<br>Sb411<br>2L Ink pack<br>ECO PASSPORT certified ink | Black         | I-AC400-K-2L-1   |
|   | Light Black   | I-AC400-LK-2L-1  |
|   | Red           | I-AC400-R-2L-1   |
|   | Blue          | I-AC400-BL-2L-1  |
|   | Orange        | I-AC400-OR-2L-1  |
| Dye sublimation (transfer) ink*<br>Sb411<br>2L Ink pack<br>ECO PASSPORT certified ink | Blue          | I-SB411-BLT-2L-1 |
|   | Magenta       | I-SB411-MT-2L-1  |
|   | Yellow        | I-SB411-YT-2L-1  |
|   | Black         | I-SB411-KT-2L-1  |
|   | Black         | I-SB411-KT-2L-1  |

Dye sublimation (transfer) (Sb411) can be used only in Hybrid.  
The "ECO PASSPORT" authenticates the safety and security for chemicals used during the production of textile dyes / pigments and auxiliaries and finishing agents.

| Item                     | Code           | Remark  |
|--------------------------|----------------|---|
| Flushing liquid 03 220ml | C-FL003-Z-22-1 | Flushing liquid for head cleaning For One way (Excluding TP400) and for Hybrid (mounting Sb420/Sb411) |
| Flushing liquid 03 2L    | C-FL003-Z-2L-1 | Flushing liquid for ink replacement   |
| Flushing liquid 12       | C-FL012-Z-22-1 | Flushing liquid for head cleaning For One way (TP400) and for Hybrid (mounting TP400)                 |
| Mist catch filter        | SPC-0810       | Filter for OPT-J0396 Mist catch unit  |

For  
TEXTILES &  
APPAREL

Brand-new Hybrid Digital Textile Printer

**Tx300P-1800 MkII**



*Ultimate  
Advantage*

Both textile and paper printing is  
available with a single printer unit.

●Some of sample images in this brochure are simulated. ●Specifications, designs and dimensions stated in this brochure may be subject to change without notice (for technical improvements, etc). ●All product and company names in this brochure are trademarks or registered of the respective companies. ●The printhead ejects extremely fine dots for printing, and therefore printed colors may vary after replacing the printheads. ●When using multiple printer units, printed colors would be different slightly because there is a slight difference among those units. ●Depending on image files used for printing, the print quality would be affected when printing in a low-resolution mode with the lowest number of passes. ●The specifications described in this catalogue are as of March 2020.

**Mimaki**  
mimaki.com

**MIMAKI ENGINEERING CO., LTD.**  
2182-3 Shigeno-otsu, Tomi-city, Nagano 389-0512, Japan  
Tel: +81-268-64-2281

Mimaki Global Network

|           |  |           |                                  |
|-----------|--|-----------|----------------------------------|
| USA       | MIMAKI USA, INC.                         | Europe    | MIMAKI EUROPE B.V.               |
| Brazil    | MIMAKI BRASIL COMERCIO E IMPORTACAO LTDA | Indonesia | PT. MIMAKI INDONESIA             |
| India     | MIMAKI INDIA PRIVATE LIMITED             | Australia | MIMAKI AUSTRALIA PTY. LTD.       |
| Taiwan    | MIMAKI ENGINEERING (TAIWAN) CO.,LTD.     | China     | SHANGHAI MIMAKI TRADING CO.,LTD. |
| Singapore | MIMAKI SINGAPORE PTE. LTD.               | Thailand  | MIMAKI (THAILAND) CO.,LTD.       |





Brand-new Hybrid Digital Textile Printer

# Tx300P-1800MkII

Ultimate Printer playing two roles in one,  
available for both textile and paper

Tx300P-1800 from Mimaki splendidly reproduces rich color gradation and delicate sophisticated lines in textile printing. In Tx300P-1800 MkII, these capabilities have been taken to a new level, and long-awaited print on paper is now available with the "hybrid ink capability" which is another unique feature of this series.

As Dye sublimation ink (transfer) for printing on transfer paper has been added, you can now select from 3 types of ink sets; "Dye sublimation ink (transfer) + Textile pigment ink", "Dye sublimation ink (transfer) + Direct sublimation ink", "Direct sublimation ink + Textile pigment ink".

Enabling print on paper will expand the possibilities of new materials and applications drastically.

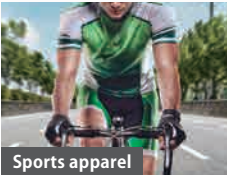
※: It is possible to load only one ink as with conventional models.



(The image shows a condition of print on paper.)

## Hybrid

Hybrid ink set  
(Two types of inks can be loaded at the same time.)



Sports apparel



Fashion apparel



Wall paper



Poster



Soft sign

One way and Hybrid are available.

## One way

One way ink set (1 type of ink is loaded)



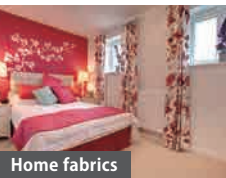
Apparel



Silk product



Fashion articles



Home fabrics



Car seat



Soft sign

Versatile use and ink type for direct printing in accordance  
with material and purpose.

Four colors for high productivity  
Six/seven/eight colors for superior expressiveness.

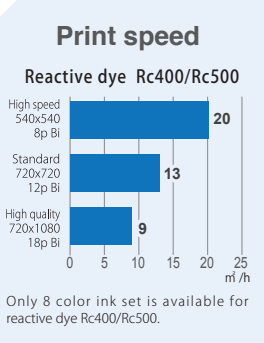
Rich variety of ink types in One way for any printing application

| Ink type                     | Color                                | Feature   | Media(Textile)                          | Pre-treatment | Post-treatment   | Application example  |
|------------------------------|--------------------------------------|---|---|---------------|--|--|
| Direct sublimation<br>Sb420  | Bl, M, Y, K,<br>Lb, Lm               | Ink for direct sublimation print. It allows to print directly onto textile.*1   | Polyester                               | Necessary     | Heating / Washing  | Soft sign / Sports apparel /<br>Fashion apparel              |
| Disperse dye<br>DD400        | C, M, Y, K, R,<br>Violet, Pink, Gray | High color fastness is achieved by dispersing dye particles in water with dispersant and heating at a high temperature to fix the color.  | Polyester /<br>Nylon                    | Necessary     | Steaming (heat + water) /<br>Pressure treatment /<br>Washing | Industrial textile /<br>Home fabrics /<br>High-class apparel |
| Textile pigment<br>TP400     | C, M, Y, K,<br>R, Bl, Lk             | Ink containing binder (bonding agent) to fix the pigment to fibers by applying heat. As this ink requires only the heat-fixing process after print, the post-process equipment can be simplified.*1,2 | Cotton /<br>Hemp /<br>Other textiles *3 |               | Heating  | Apparel / Home fabrics /<br>Fashion articles                 |
| Reactive dye<br>Rc400, Rc500 | C, M, Y, K,<br>Lk, R, Bl, Or         | It provides excellent color development and color reproducibility. Combination of dyestuff molecules and fibers delivers superior water resistance, scratch resistance, and light resistance.         | Cotton /<br>Hemp /<br>Silk / Rayon      | Necessary     | Steaming (heat + water) /<br>Washing                         | Apparel / Home fabrics                                       |
| Acid dye<br>Ac400            | C, M, Y, K,<br>Lk, R, Bl, Or         | Property of acid is utilized to vividly dye animal-based materials such as wool, leather and silk as well as nylon and other protein-based man-made fibers.   | Wool /<br>Leather /<br>Silk / Nylon     | Necessary     | Steaming (heat + water) /<br>Washing                         | Apparel / Home fabrics                                       |

\*1: Post-processing such as steaming and washing may be necessary depending on the print conditions.

\*2: Beautiful results can be achieved even in high-density color print by performing pre-processing.

\*3: It is available to print other textiles than cotton / hemp with pre-treatment. Be sure to make a test print in advance.



Versatile ink combination in Hybrid

|           | Ink type                             | Color       | Feature   | Media(Textile/Paper)   | Pre-treatment | Post-treatment       | Application example  |
|-----------|--------------------------------------|-------------|---|--|---------------|----------------------|--|
| Ink set 1 | Dye sublimation (transfer) ink Sb411 | Bl, M, Y, K | Transfers the printed transfer paper in close contact with the media without any pre-treatment. Excellent color development and color reproducibility.  | After printing on transfer paper, transferring to polyester  |               | Heating              | Soft sign / Sports apparel /<br>Fashion apparel                    |
|           | Textile pigment ink TP400            | C, M, Y, K  | Ink containing binder (bonding agent) to fix the pigment to fibers by applying heat. As this ink requires only the heat-fixing process after print, the post-process equipment can be simplified.*1,2 | Direct printing on cotton, hemp, others (textile*) and paper |               | Heating              | Apparel / Home fabrics /<br>Fashion articles / Wall paper / Poster |
| Ink set 2 | Direct sublimation ink Sb420         | Bl, M, Y, K | Ink for direct sublimation print. It allows to print directly onto textile.*3   | Direct printing on polyester                                 | Necessary     | Heating /<br>Washing | Soft sign / Sports apparel /<br>Fashion apparel                    |
|           | Textile pigment ink TP400            | C, M, Y, K  | Ink containing binder (bonding agent) to fix the pigment to fibers by applying heat. As this ink requires only the heat-fixing process after print, the post-process equipment can be simplified.*1,2 | Direct printing on cotton, hemp, others (textile*) and paper |               | Heating              | Apparel / Home fabrics /<br>Fashion articles / Wall paper / Poster |
| Ink set 3 | Dye sublimation (transfer) ink Sb411 | Bl, M, Y, K | Transfers the printed transfer paper in close contact with the media without any pre-treatment. Excellent color development and color reproducibility.  | After printing on transfer paper, transferring to polyester  |               | Heating              | Soft sign / Sports apparel /<br>Fashion apparel                    |
|           | Direct sublimation ink Sb420         | Bl, M, Y, K | Ink for direct sublimation print. It allows to print directly onto textile.*3   | Direct printing on polyester                                 | Necessary     | Heating /<br>Washing | Soft sign / Sports apparel /<br>Fashion apparel                    |

\*1: Post-processing such as steaming and washing may be necessary depending on the print conditions. \*2: Beautiful results can be achieved even in high-density color print by performing pre-processing.

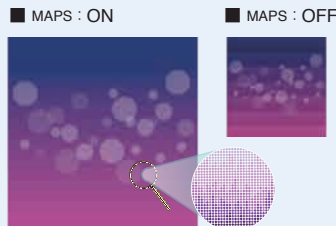
\*3: It is available to print other textiles than cotton / hemp with pre-treatment. Be sure to make a test print in advance

## Mimaki's print technologies

### Mimaki Advanced Pass System 4 (MAPS4) reduces banding

Mimaki's unique anti-banding technique MAPS4\* is an advanced version of MAPS3. To prevent banding, swath boundaries are overprinted, whereas boundaries prone to banding are printed with fewer ink droplets.

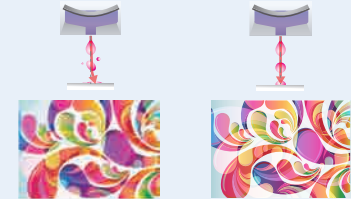
\*MAPS4: Mimaki Advanced Pass System 4



### Superior inkjet technology

Mimaki's superior inkjet technology accurately places the ink droplets without losing their perfect circularity. This ensures that texts, lines, and edges are clearly and sharply printed.

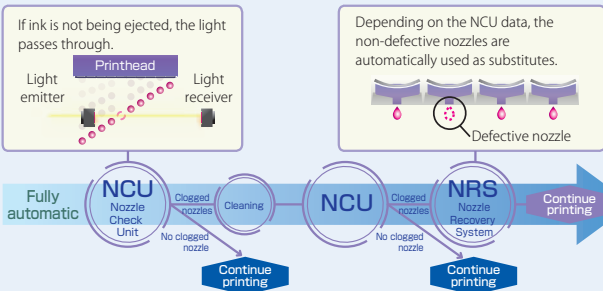
■ No waveform control    ■ Waveform control applied



## Uninterrupted printing solutions

### Continuous operation support pack minimizes the downtime

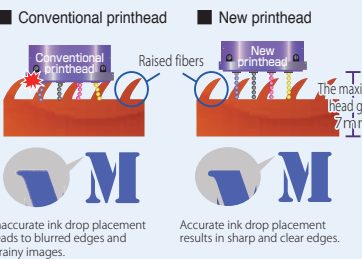
The Nozzle Check Unit (NCU) detects nonfunctioning nozzles and automatically cleans them. If the nozzles fail to operate after cleaning, defective nozzles are replaced by non-defective ones until a technician arrives, and printing is continued. This feature enables uninterrupted print operations and continuous productivity.



## Ultimate design for usability ensuring high-quality production

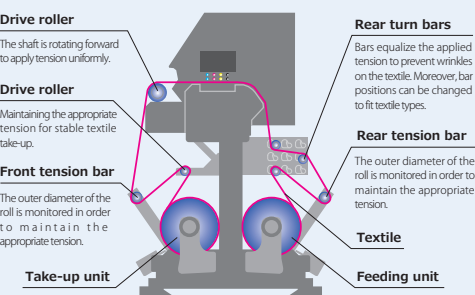
### New printhead allows printing on various types of textile

While printing on raised fiber surface textiles, a high head gap setting is required to prevent contact between the printhead and the nap. In conventional models, such gap conditions reduce the accuracy of ink droplet placement. However, the new printhead ejects ink droplets at a high speed to maintain the straightness of the droplet direction, and accordingly accurate ink droplet placement is achieved. This enables high-quality printing on napped textiles. (Recommended head gap : 3mm)



### Reliable textile feeding mechanism ensures stable printing

Tx300P-1800 MkII can detect automatically changes in tension caused by media roll diameter varying to adjust the tension with a tension bar. Since the tension of media is kept constant, the textile feeding is stable even in high-speed printing and long-length printing to contribute in high-quality printing.



## Standard features of MBIS3 and UISS deliver continuous printing for a long time.

Large two liter ink packs are installed in MBIS3\*1 for long-time continuous printing to reduce operating cost. As soon as one ink container is empty, UISS\*2 automatically provides ink from another container without any interruption to printing.

These systems supply ink continuously to ensure unattended continuous printing.

\*1 MBIS3: Mimaki Bulk Ink System3  
\*2 UISS: Uninterrupted Ink Supply System  
\*3 UISS functions with 4-color operation.



## Ethernet supported! - Establish free and efficient work environment -

More free and efficient work-site environment can be put in place, by editing data using any PC in your office, then sending print data directly to a printer in your work operation site, for example.

